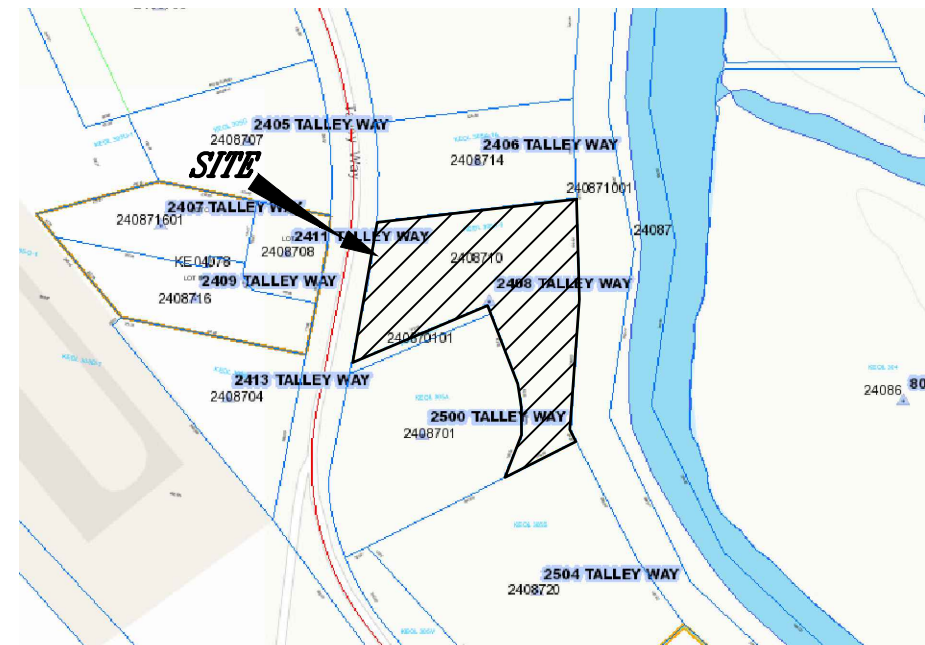


ULTIMATE STEEL

KELSO, WASHINGTON (SE 1/4, S2, T7N, R2W)



VICINITY MAP
NO SCALE

erosion control
inspection required
Contact Inspection Services
Before You Begin Any Sitework

PLOT PLAN NOTE:
PLOT PLAN SHOWN IN PLAN SET WAS PROVIDED BY OTHERS.
SGA PROVIDED THE STORMWATER REPORT AND PLAN SET.

PARCEL INFORMATION

2408710
SE 1/4, S2, T7N, R2W
2408 TALLEY WAY
KELSO, WA 98626

CONTACT/ENGINEER
SGA ENGINEERING, PLLC
2005 BROADWAY
VANCOUVER, WASHINGTON 98663
PHONE (360) 993-0911

PROPERTY OWNER
KAY BURRELL
2621 S. FRONTAGE RD
REXBURG, ID 83440

SHEET INDEX

SHEET	DESCRIPTION
1.	COVER SHEET
2.	EXISTING CONDITIONS SHEET
3.	NATIVE VEGETATION PRESERVATION AREA SHEET
4.	EROSION CONTROL AND DRAINAGE SHEET
5.	EROSION CONTROL NOTES
6.	EROSION CONTROL DETAILS
7.	DRAINAGE DETAILS
8.	BIORETENTION PLANTINGS

SGA ENGINEERING & DESIGN

CIVIL ENGINEERING ~ LAND PLANNING
DEVELOPMENT SERVICES
LANDSCAPE ARCHITECTURE

2005 BROADWAY
VANCOUVER, WA 98663
PHONE (360)993-0911
FAX (360)993-0912

COVER SHEET

ULTIMATE
STEEL

WASHINGTON

KELSO

REVISIONS

DESIGNED BY: KMF
DRAWN BY: KMF
CHECKED BY: KRS
SCALE: N/A

JOB NUMBER
2218

SHEET
1 of 6

DWE PLOTTED: Aug. 04, 2023 - 4:37 PM SGA DRAWING FILE: W:\DWG\2218-ULTIMATE STEEL ERECTION\DRAWINGS\ULTIMATE STEEL STORMWATER.DWG

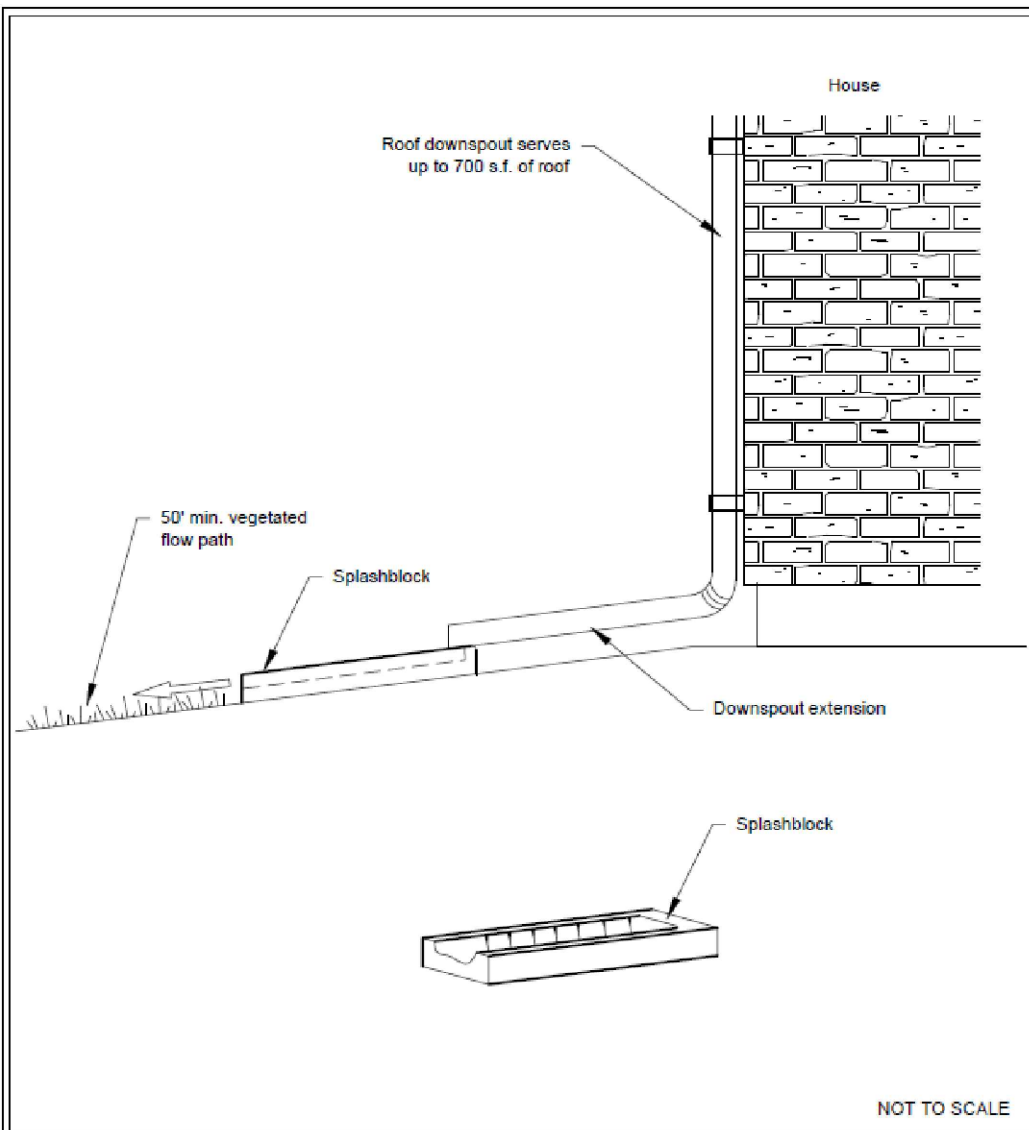


Figure III-3.1.7
Typical Downspout Splashblock Dispersion

Revised December 2015

Please see <http://www.ecy.wa.gov/copyright.html> for copyright notice including permissions, limitation of liability, and disclaimer.

SGA ENGINEERING & DESIGN

CIVIL ENGINEERING ~ LAND PLANNING
DEVELOPMENT SERVICES
LANDSCAPE ARCHITECTURE

2005 BROADWAY
VANCOUVER, WA 98663
PHONE (360)993-0911
FAX (360)993-0912

DRAINAGE DETAILS

ULTIMATE STEEL

WASHINGTON

KELSO

REVISIONS

DESIGNED BY: KMF
DRAWN BY: KMF
CHECKED BY: KRS
SCALE: N/A

JOB NUMBER
2218

SHEET
6 of 6